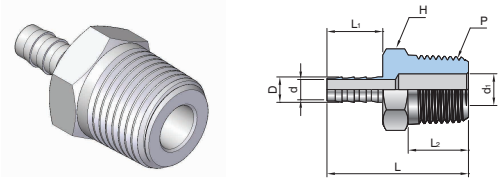


INSTRUMENT

Hose Connectors



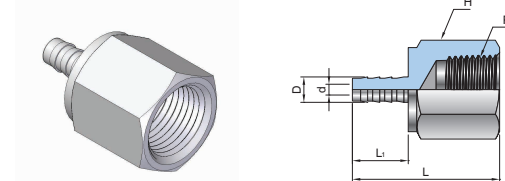
UHMC Hose Male Connector



Connects Hose to Female Pipe

Part No.	Hose I.D.	P	Dimensions (mm)						
			D	d	d ₁	H	L	L ₁	L ₂
UHMC-02H02N	1/8	1/8	0.15	0.08	0.19	7/16	1.08	0.40	0.38
UHMC-02H04N	1/8	1/4	0.15	0.08	0.28	9/16	1.26	0.40	0.56
UHMC-03H02N	3/16	1/8	0.23	0.12	0.12	7/16	1.27	0.59	0.38
UHMC-03H04N	3/16	1/4	0.23	0.12	0.28	9/16	1.45	0.59	0.56
UHMC-04H02N	1/4	1/8	0.30	0.19	0.19	7/16	1.47	0.79	0.38
UHMC-04H04N	1/4	1/4	0.30	0.19	0.19	9/16	1.65	0.79	0.56
UHMC-04H06N	1/4	3/8	0.30	0.19	0.19	11/16	1.66	0.79	0.56
UHMC-04H08N	1/4	1/2	0.30	0.19	0.49	7/8	1.85	0.79	0.75
UHMC-05H02N	5/16	1/8	0.38	0.19	0.19	7/16	1.55	0.87	0.38
UHMC-05H04N	5/16	1/4	0.38	0.19	0.19	9/16	1.73	0.87	0.56
UHMC-05H06N	5/16	3/8	0.38	0.19	0.19	11/16	1.74	0.87	0.56
UHMC-05H08N	5/16	1/2	0.38	0.19	0.47	7/8	1.96	0.87	0.75
UHMC-06H04N	3/8	1/4	0.45	0.30	0.30	9/16	1.73	0.87	0.56
UHMC-06H06N	3/8	3/8	0.45	0.30	0.30	11/16	1.74	0.87	0.56
UHMC-06H08N	3/8	1/2	0.45	0.30	0.30	7/8	1.96	0.87	0.75
UHMC-08H04N	1/2	1/4	0.60	0.38	0.28	11/16	1.80	0.94	0.56
UHMC-08H06N	1/2	3/8	0.60	0.38	0.38	11/16	1.81	0.94	0.56
UHMC-08H08N	1/2	1/2	0.60	0.38	0.38	7/8	2.03	0.94	0.75
UHMC-10H08N	5/8	1/2	0.75	0.47	0.47	1-1/16	2.07	0.98	0.75
UHMC-10H12N	5/8	3/4	0.75	0.50	0.63	1-1/16	2.07	0.98	0.75
UHMC-12H08N	3/4	1/2	0.90	0.63	0.47	1-1/16	2.14	1.05	0.75
UHMC-12H12N	3/4	3/4	0.90	0.63	0.63	1-1/16	2.14	1.05	0.75
UHMC-12H16N	3/4	1	0.90	0.63	0.88	1-3/8	2.43	1.05	0.94
UHMC-16H12N	1	3/4	1.20	0.88	0.63	1-3/8	2.38	1.19	0.75
UHMC-16H16N	1	1	1.20	0.88	0.88	1-3/8	2.57	1.19	0.94

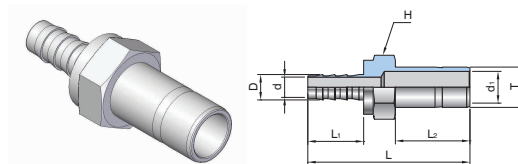
UHFC Hose Female Connector



Connects Hose to Male Pipe

Part No.	Hose I.D.	P	Dimensions (mm)				
			D	d	H	L	L ₁
UHFC-02H02N	1/8	1/8	0.15	0.08	9/16	1.11	0.40
UHFC-02H04N	1/8	1/4	0.15	0.08	3/4	1.26	0.40
UHFC-03H02N	3/16	1/8	0.23	0.12	9/16	1.29	0.59
UHFC-03H04N	3/16	1/4	0.23	0.12	3/4	1.44	0.59
UHFC-04H02N	1/4	1/8	0.30	0.19	9/16	1.47	0.79
UHFC-04H04N	1/4	1/4	0.30	0.19	3/4	1.64	0.79
UHFC-04H06N	1/4	3/8	0.30	0.19	7/8	1.71	0.79
UHFC-05H04N	5/16	1/4	0.38	0.19	3/4	1.73	0.87
UHFC-05H06N	5/16	3/8	0.38	0.19	7/8	1.82	0.87
UHFC-06H04N	3/8	1/4	0.45	0.30	3/4	1.69	0.87
UHFC-06H06N	3/8	3/8	0.45	0.30	7/8	1.78	0.87
UHFC-06H08N	3/8	1/2	0.45	0.30	1-1/16	2.03	0.87
UHFC-08H08N	1/2	1/2	0.60	0.38	1-1/16	2.13	0.94

UHTA Hose Tube Adapter



Connects Hose to UNILOK Tube Fitting

Part No.	Hose I.D.	Tube O.D. T	Dimensions (mm)						
			D	d	d ₁	H	L	L ₁	L ₂
UHTA-02H02T	1/8	1/8	0.15	0.08	0.09	5/16	1.35	0.40	0.53
UHTA-02H04T	1/8	1/4	0.15	0.08	0.19	3/8	1.44	0.40	0.62
UHTA-04H04T	1/4	1/4	0.30	0.19	0.19	7/16	1.83	0.79	0.62
UHTA-04HM06T	1/4	6mm	0.30	0.19	0.18	7/16	1.86	0.79	0.62
UHTA-04H06T	1/4	3/8	0.30	0.19	0.28	7/16	1.90	0.79	0.69
UHTA-05H04T	5/16	1/4	0.37	0.19	0.19	7/16	1.91	0.87	0.62
UHTA-06H06T	3/8	3/8	0.45	0.30	0.28	9/16	1.98	0.87	0.69
UHTA-06H08T	3/8	1/2	0.45	0.30	0.39	5/8	2.20	0.87	0.91
UHTA-08H06T	1/2	3/8	0.60	0.38	0.28	11/16	2.05	0.94	0.69
UHTA-08H08T	1/2	1/2	0.60	0.38	0.39	11/16	2.27	0.94	0.91
UHTA-12H12T	3/4	3/4	0.90	0.63	0.59	1-1/16	2.44	1.05	0.97

How To Order

Standard materials is 316SS. To order, add - SS to the end of part number.

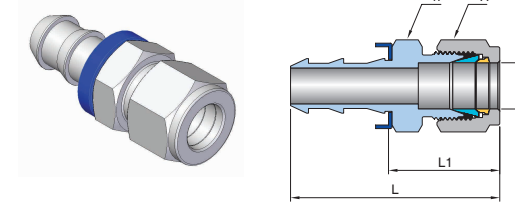
Example: UHMC-08H08N-SS

Cleaning

UNILOK fittings are free from machine oils, loose particles and grease throughout the close cleaning process.

Dimensions are for reference only and are subject to change without prior notice.

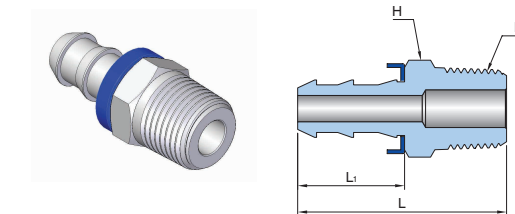
UHPTFA Push-On Hose Tube Fitting Adapter



Connects Hose to Tube

Part No.	Hose I.D.	Tube O.D. T	Dimensions (mm)			
			H	h	L	L ₁
UHPTFA-04H04	1/4	1/4	9/16	9/16	50.0	30.7
UHPTFA-06H06	3/8	3/8	11/16	11/16	53.6	31.5
UHPTFA-08H08	1/2	1/2	7/8	7/8	62.7	36.1

UHPMC Push-On Hose Male Connector



Connects Hose to Male Pipe

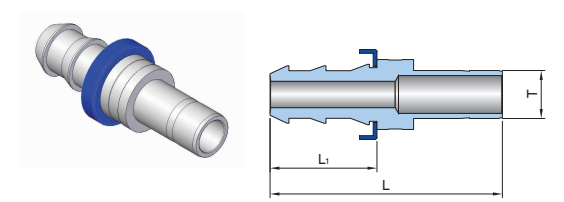
Part No.	Hose I.D.	P	Dimensions (mm)		
			H	L	L ₁
UHPMC-04H04	1/4	1/4	9/16	42.7	23.4
UHPMC-06H04	3/8	1/4	11/16	45.7	23.6
UHPMC-06H06	3/8	3/8	11/16	45.7	23.6
UHPMC-08H08	1/2	1/2	7/8	55.6	29.0
UHPMC-12H12	3/4	3/4	1-1/16	71.4	29.2

How To Order

Standard materials is 316SS. To order, add - SS to the end of part number.

Example: UHPTFA-08H08T-SS

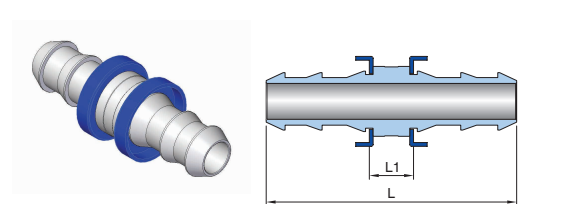
UHPTA Push-On Hose Tube Adapter



Connects Hose to UNILOK Tube Fitting

Part No.	Hose I.D.	Tube O.D. T	Dimensions (mm)	
			L	L ₁
UHPTA-04H04T	1/4	1/4	49.0	29.7
UHPTA-06H06T	3/8	3/8	51.6	29.5
UHPTA-08H08T	1/2	1/2	62.7	36.1
UHPTA-12H12T	3/4	3/4	79.8	37.6

UHPSU Push-On Hose Straight Union



Connects Hose

Part No.	Hose I.D.	Tube O.D. T	Dimensions (mm)	
			L ₁	L ₂
UHPSU-04H04H	1/4	1/4	52.6	14.0
UHPSU-06H06H	3/8	3/8	57.2	13.0
UHPSU-08H08H	1/2	1/2	69.4	13.0
UHPSU-12H12H	3/4	3/4	100.8	13.0

Cleaning

UNILOK fittings are free from machine oils, loose particles and grease throughout the close cleaning process.

Dimensions are for reference only and are subject to change without prior notice.

INSTRUMENT

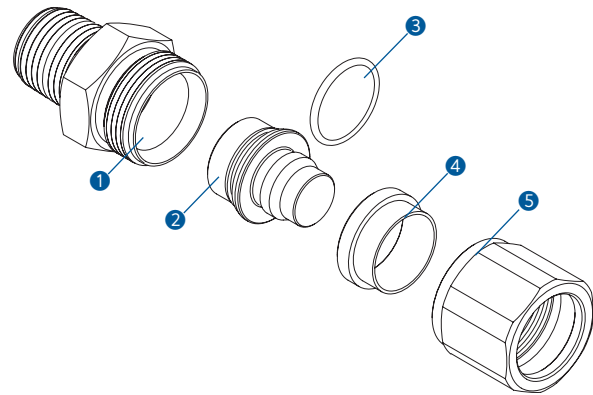
Hose Fittings



Features

- UHFM the structure and assembly is simple.
- To prevent separation of the hose.
- The Body can be replaced with UMC or UME.
(UMC = Male Connector, UME = Male Elbow)
- It can be disassembled and reassembled.

Materials of Construction



No.	Description	Materials
1	BODY	316SS
2	INSERT	304SS
3	O-RING	FKM
4	SLEEVE	POLYCETAL
5	FEMALE NUT	316SS

Assembly Method

- Cut the hose surface evenly.
- Insert the nut and sleeve on the hose.
- Insert the hose in the insert parts.
(The surface of the hose should touch the wall at the end of insert parts.)
- Insert the nut and sleeve on the hose.
- The nut is assembled to touch the body wall.

Working Pressure

Hose Size (mm) I.D.*O.D.	Working Pressure (MPa)
6*11-10*16	0-1.0
12*18-15*22	0-0.8
19*26-25*33	0-0.6
32*41	0-0.4

- Available Hose : Soft PVC
- Use the hose size indicated in the catalog.
- Working pressure is can be changed by used hose.

Cleaning

UNILOK Hose fittings are free from machine oils, loose particles and grease throughout the close cleaning process.

Important Notification

Proper installation, materials compatibility, operation and maintenance of these valves are the responsibility of the user. The total system design must be taken into consideration to ensure optimal Performance and safety.

thread is applied depends on the body.

How To order

UNILOK UHFM series Hose Fitting are ordered by part number as shown below.

Example: The following part number, *UHFC-H0915-04R-SS* is designated for UHFM series Hose Fitting, Body Type UMC, Hose Size(I.D.*O.D) 09*15, Body thread 1/4"PT, 316SS.



Fitting Type	
Male Connector	HFMC
Male Elbow	HFME

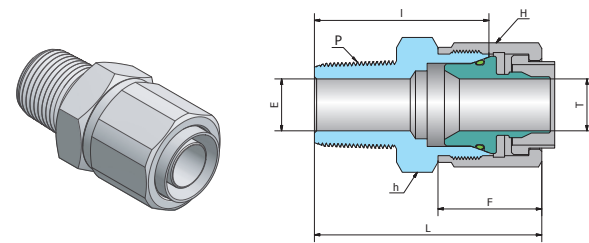
Hose Size								
Hose Size (I.D.*O.D.)	mm	8*13.5	9*15	10*16	12*18	15*22	19*26	25*33
Designator		H0813	H0915	H1016	H1218	H1522	H1926	H2533

Pipe Size Designation (NPT or ISO7/1-PT)						
Pipe Size	1/8	1/4	3/8	1/2	3/4	1
Designator	02	04	06	08	12	16

Thread Type Designation		
Designator	Thread Type	
N	NPT	National Standard Pipe Thread
R	ISO 7/1	Taper Pipe Thread

Body Materials	
Designator	SS
Materials	316SS

UHFC

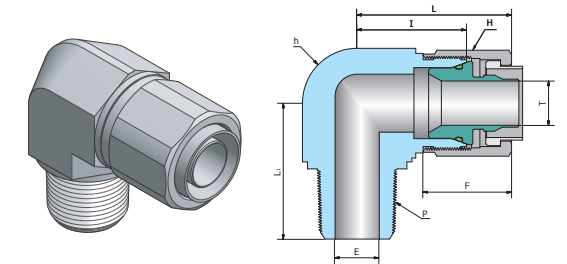


Part No.	P ISO7/1	Dimensions (mm)								
		E Min.	H		h		L	F	I	T
			inch	mm	inch	mm				
UHFC-H0611-02R	1/8	4.8	15/16	23.81	13/16	20.63	39.1	22.0	28.7	6.0
UHFC-H0611-04R	1/4	7.1	15/16	23.81	13/16	20.63	43.7	22.0	33.3	6.0
UHFC-H0611-06R	3/8	9.7	15/16	23.81	13/16	20.63	43.7	22.0	33.3	6.0
UHFC-H0611-08R	1/2	10.4	15/16	23.81	7/8	22.22	49.3	22.0	38.9	6.0
UHFC-H0611-12R	3/4	10.4	15/16	23.81	1-1/16	26.98	50.8	22.0	40.4	6.0
UHFC-H0611-16R	1	10.4	15/16	23.81	1-3/8	34.92	57.4	22.0	47.0	6.0
UHFC-H0813-02R	1/8	4.8	15/16	23.81	13/16	20.63	39.1	22.0	28.7	8.0
UHFC-H0813-04R	1/4	7.1	15/16	23.81	13/16	20.63	43.7	22.0	33.3	8.0
UHFC-H0813-06R	3/8	9.7	15/16	23.81	13/16	20.63	43.7	22.0	33.3	8.0
UHFC-H0813-08R	1/2	10.4	15/16	23.81	7/8	22.22	49.3	22.0	38.9	8.0
UHFC-H0813-12R	3/4	10.4	15/16	23.81	1-1/16	26.98	50.8	22.0	40.4	8.0
UHFC-H0813-16R	1	10.4	15/16	23.81	1-3/8	34.92	57.4	22.0	47.0	8.0
UHFC-H0915-04R	1/4	7.1	15/16	23.81	15/16	23.81	44.7	22.5	34.0	9.0
UHFC-H0915-06R	3/8	9.7	15/16	23.81	15/16	23.81	44.7	22.5	34.0	9.0
UHFC-H0915-08R	1/2	11.9	15/16	23.81	15/16	23.81	49.6	22.5	38.9	9.0
UHFC-H0915-12R	3/4	12.7	15/16	23.81	1-1/16	26.98	51.1	22.5	40.4	9.0
UHFC-H1016-04R	1/4	7.1	15/16	23.81	15/16	23.81	44.7	22.5	34.0	10.0
UHFC-H1016-06R	3/8	9.7	15/16	23.81	15/16	23.81	44.7	22.5	34.0	10.0
UHFC-H1016-08R	1/2	11.9	15/16	23.81	15/16	23.81	49.6	22.5	38.9	10.0
UHFC-H1016-12R	3/4	12.7	15/16	23.81	1-1/16	26.98	51.1	22.5	40.4	10.0
UHFC-H1218-06R	3/8	10.4	1-1/16	26.98	1-1/16	26.98	47.6	24.0	35.4	12.0
UHFC-H1218-08R	1/2	11.9	1-1/16	26.98	1-1/16	26.98	52.6	24.0	40.4	12.0
UHFC-H1218-12R	3/4	15.7	1-1/16	26.98	1-1/16	26.98	52.6	24.0	40.4	12.0
UHFC-H1218-16R	1	15.7	1-1/16	26.98	1-3/8	34.92	59.2	24.0	47.0	12.0
UHFC-H1522-12R	3/4	15.7	1-1/4	31.75	1-3/16	30.16	53.6	25.0	40.4	15.0
UHFC-H1522-16R	1	18.3	1-1/4	31.75	1-3/8	34.92	60.2	25.0	47.0	15.0
UHFC-H1926-08R	1/2	11.9	1-1/2	38.10	1-3/8	34.92	58.2	27.0	45.2	19.0
UHFC-H1926-12R	3/4	15.7	1-1/2	38.10	1-3/8	34.92	58.2	27.0	45.2	19.0
UHFC-H1926-16R	1	22.4	1-1/2	38.10	1-3/8	34.92	63.0	27.0	50.0	19.0
UHFC-H2533-16R	1	22.4	1-1/4	44.45	1-3/4	44.45	75.9	37.5	55.1	25.0
UHFC-H2533-20R	1-1/4	27.7	1-1/4	44.45	1-3/4	44.45	75.9	37.5	55.1	25.0

NPT threads are available for all metric UHFC. To order, add "N" as a suffix instead of "R".

Dimensions are for reference only and are subject to change without prior notice.

UHFE



Part No.	P ISO7/1	Dimensions (mm)									
		E Min.	H		h		L	L ₁	F	I	T
			inch	mm	inch	mm					
UHFE-H0611-04R	1/4	7.1	15/16	23.81	13/16	20.63	36.3	28.3	22.0	25.9	6.0
UHFE-H0611-06R	3/8	9.7	15/16	23.81	13/16	20.63	36.3	28.3	22.0	25.9	6.0
UHFE-H0611-08R	1/2	10.4	15/16	23.81	13/16	20.63	36.3	33.0	22.0	25.9	6.0
UHFE-H0813-02R	1/8	4.8	15/16	23.81	13/16	20.63	36.3	23.3	22.0	25.9	8.0
UHFE-H0813-04R	1/4	7.1	15/16	23.81	13/16	20.63	36.3	28.3	22.0	25.9	8.0
UHFE-H0813-06R	3/8	9.7	15/16	23.81	13/16	20.63	36.3	28.3	22.0	25.9	8.0
UHFE-H0813-08R	1/2	10.4	15/16	23.81	13/16	20.63	36.3	33.0	22.0	25.9	8.0
UHFE-H0915-04R	1/4	7.1	15/16	23.81	15/16	23.81	37.6	30.2	22.5	26.9	9.0
UHFE-H0915-06R	3/8	9.7	15/16	23.81	15/16	23.81	37.6	30.2	22.5	27.9	9.0
UHFE-H1016-04R	1/4	7.1	15/16	23.81	15/16	23.81	37.6	30.2	22.5	26.9	10.0
UHFE-H1016-06R	3/8	9.7	15/16	23.81	15/16	23.81	37.6	30.2	22.5	27.9	10.0
UHFE-H1016-08R	1/2	11.9	15/16	23.81	15/16	23.81	37.6	35.1	22.5	27.9	10.0
UHFE-H1218-04R	1/4	7.1	1-1/16	26.98	1-1/16	26.98	41.9	31.9	24.0	29.7	12.0
UHFE-H1218-06R	3/8	9.7	1-1/16	26.98	1-1/16	26.98	41.9	31.9	24.0	29.7	12.0
UHFE-H1218-08R	1/2	11.9	1-1/16	26.98	1-1/16	26.98	41.9	36.8	24.0	29.7	12.0
UHFE-H1218-12R	3/4	15.7	1-1/16	26.98	1-1/16	26.98	41.9	36.8	24.0	29.7	12.0
UHFE-H1926-12R	3/4	15.7	1-1/2	38.10	1-3/8	34.92	49.8	41.7	27.0	36.8	19.0
UHFE-H1926-16R	1	22.4	1-1/2	38.10	1-3/8	34.92	49.8	46.5	27.0	36.8	19.0
UHFE-H2533-16R	1	22.4	1-3/4	44.45	1-11/16	42.86	64.8	51.3	37.5	44.0	25.0
UHFE-H2533-20R	1-1/4	27.7	1-3/4	44.45	1-11/16	42.86	64.8	51.1	37.5	44.0	25.0

NPT threads are available for all metric UHFE. To order, add "N" as a suffix instead of "R".

Dimensions are for reference only and are subject to change without prior notice.